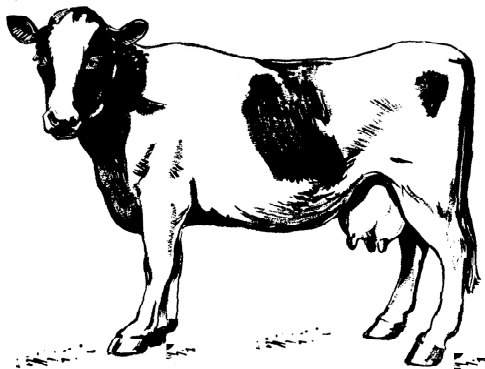
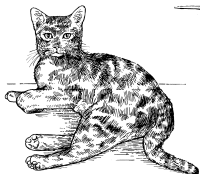
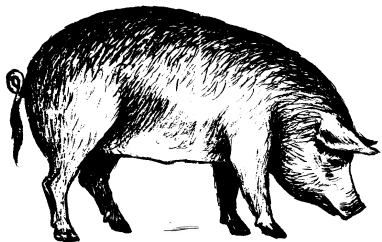


Fidiimwa

Wanyama wanaofugwa

Domestic Animals

Kisangu
Kiswahili
Kiingereza
Tuhamini lugha zetu



Fidiimwa

Wanyama wanaofugwa

Domestic Animals

Huduma ya Kutafsiri Biblia
na Kuendeleza Lugha za Asili, Mbeya
S.L.P. 6359, Mbeya, Tanzania
literacy_mbeya@sil.org

pamoja na
SIL International



Loleela: Ipisha sa nkhanu mu litaafili ili sisiwonensa ishijelo sha shiyooli isha nkhanu.

Tazama: Picha za wanyama katika kitabu hiki hazionyeshi saizi ya kweli.

NB: The pictures of the animals in this book do not show the real size.

Utangulizi: Huduma ya Kutafsiri Biblia na Kuendeleza Lugha za Asili, Mbeya (SIL International) ilianza tarehe 23 Julai 2003. Ilianza kwa ushirikiano kati ya viongozi wa makanisa na mashirika mbalimbali na SIL International.

Kusudi letu ni kuwahudumia watu wa makabila yafuatayo: Wabena, Wabungu, Wakinga, Wakisi, Wamalila, Wamanda, Wandali, Wanyakyusa, Wanyiha, Wapangwa, Wasafwa, Wasangu na Wawwanji.

Lengo letu la kwanza ni kuyafikia makabila hayo kwa Neno la Mungu (Biblia) katika lugha zao kwa sababu tunaamini MUNGU ANAONGEA LUGHA ZOTE!

Lengo letu la pili ni kuwaheshimu watu wa makabila haya kwa njia ya kuwafundisha kusoma na kuandika lugha zao (Idara ya Kisomo).

Sera ya Utamaduni ya Tanzania inasema hivi:

3.2. Lugha za Jamii

Lugha za jamii ni hazina kuu ya historia, mila, desturi, teknolojia na utamaduni wetu kwa jumla. Aidha, lugha hizi ni msingi wa lugha yetu ya taifa, yaani Kiswahili...

Kichwa: Fidiimwa / Wanyama wanaofugwa / Domestic Animals

Lugha: Kisangu / Kiswahili / Kiingereza

Kimeandaliwa na: Nancy Loveland, Brigitte Niederseer, Liz Wisbey

Mtafsiri: Phedrick P. Mwanavisi

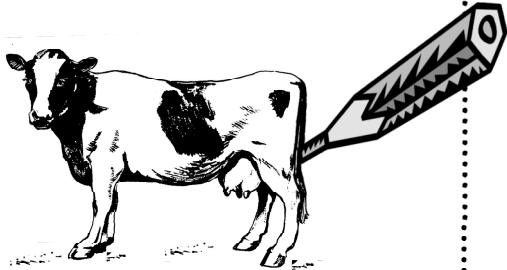
Michoro: © 2001 International Illustrations, the Art of Reading 2.0

Toleo la kwanza © 2018 SIL International

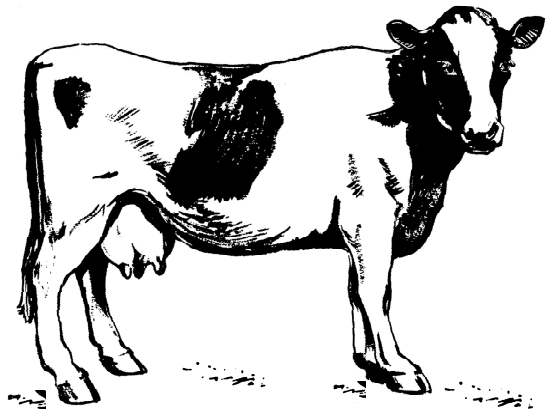
Nda wisakula ukwiliile kihiliva ilanji sa pisha isi isa nkhanu.

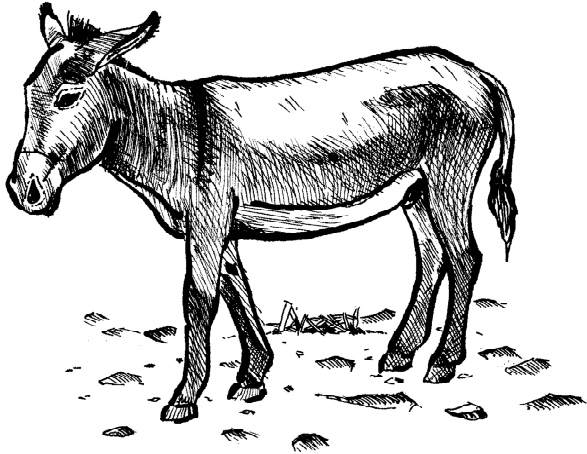
Ukitaka unaweza kupaka rangi picha hizi za wanyama.

If you want you can colour these pictures of the animals.



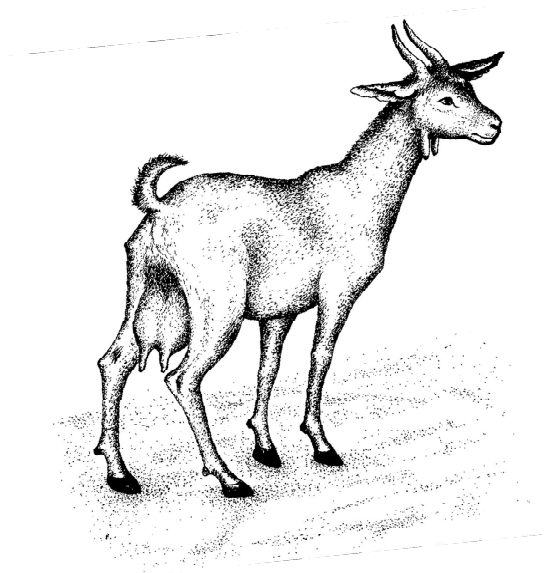
ng'ombe
ng'ombe
COW

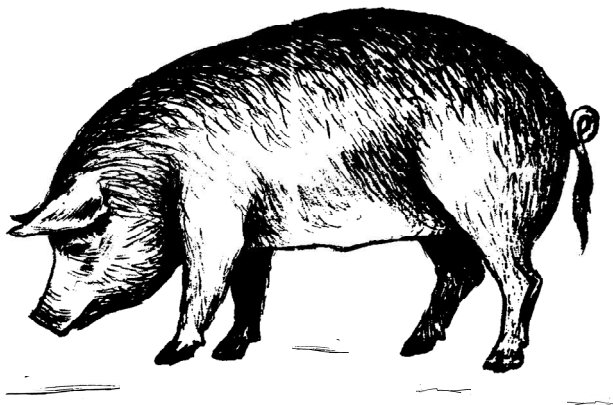




dogovi
punda
donkey

mene
mbuzi
goat

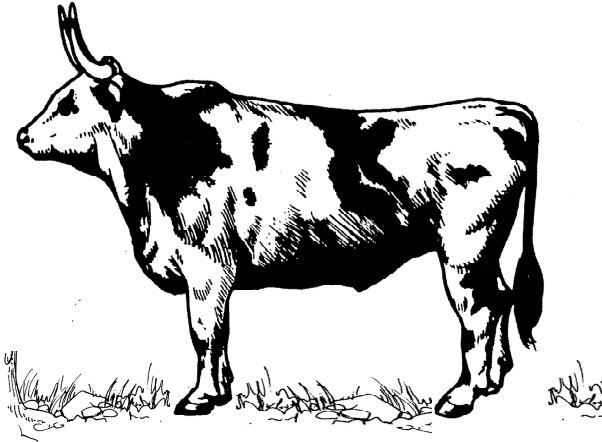




ngubi
nguruwe
pig

nkholo
kondoo
sheep



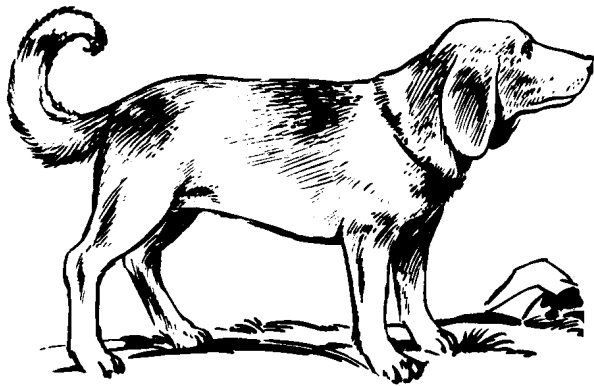


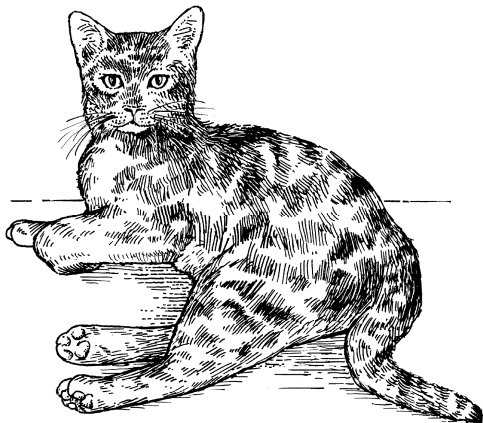
gida
fahali
bull

mbwa

mbwa

dog



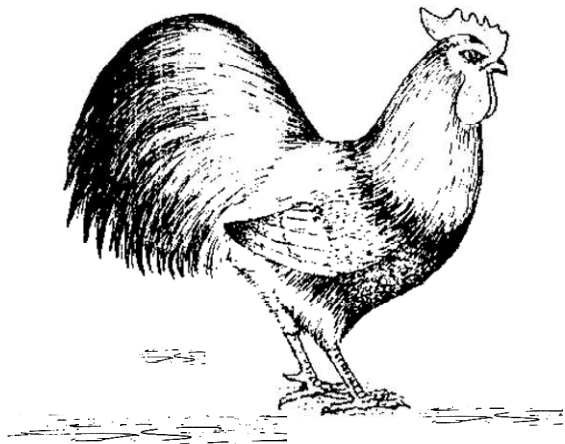


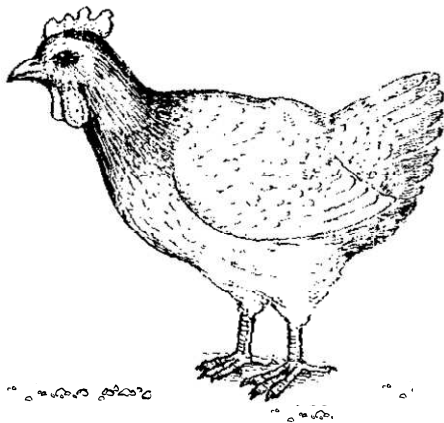
nyaawu

paka

cat

njogolo
jogoo
rooster





nswiga
tetea
hen

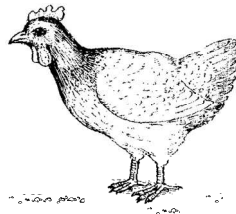
Wuli, ukwiliile kiyandikha amataawa ga nkhanu isi kwa Shisangu, Shiswahili ni Shingeleesa?

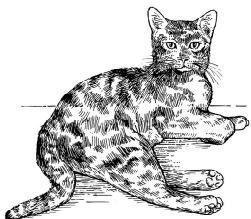
Je, unaweza kuandika majina ya wanyama hawa kwa Kisangu, Kiswahili na Kiingereza?

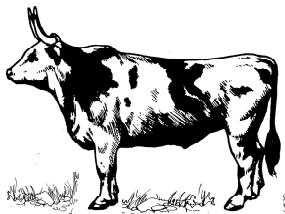
Now, can you write the names of these animals in Sangu, Swahili and English?

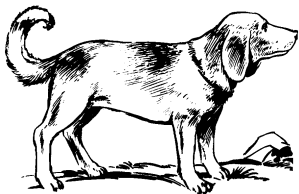


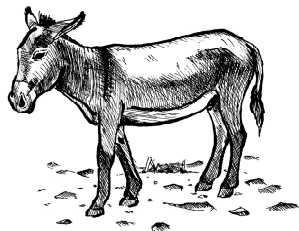


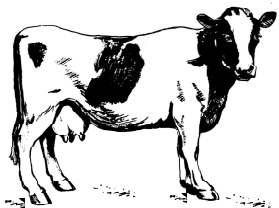


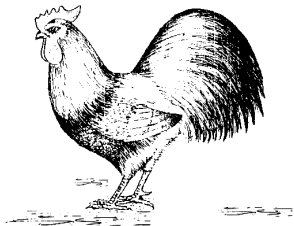


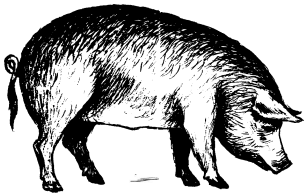










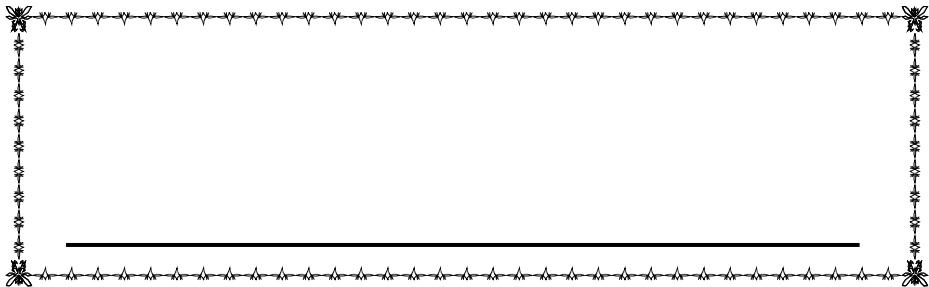


Ndaga kwa kimala amamanyiso!
Hongera kwa kumaliza mazoezi!
Congratulations on finishing the exercises!

Ilitaafili ili wusi wa:

Kijitabu hiki ni mali ya:

This booklet belongs to:



Kama una maswali yoyote au unataka kununua vitabu au kuhudhuria darasa la kusoma, wasiliana na ofisi ya huduma yetu.

Namba za simu:

Prisca Malewa: 0757 552 828

Ofisi: 025 250 0100

TSH 300/=